

Cambridge Right | Villa 18

 x2  x2  x2  272m²



P 027 301 3126 | E sales@matamatacountryclub.co.nz
matamatacountryclub.co.nz

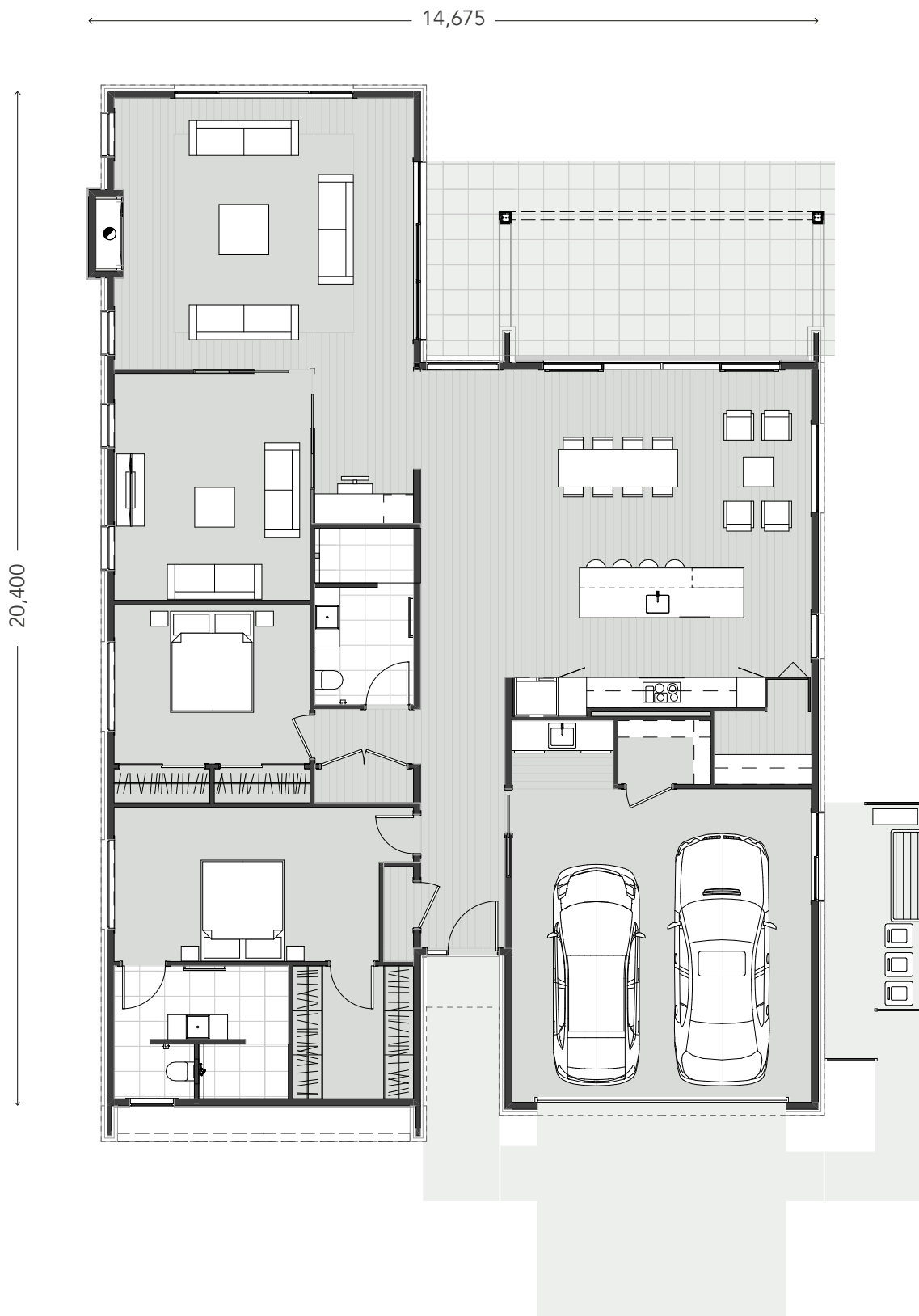
Facades are for illustrative purposes. Areas are rounded. Matamata Country Club Limited reserves the right to change facade design as required.



Matamata
Country Club

Cambridge Right | Villa 18

 x2  x2  x2  272m²



P 027 301 3126 | E sales@matamatacountryclub.co.nz
matamatacountryclub.co.nz

Facades are for illustrative purposes. Areas are rounded. Matamata Country Club Limited reserves the right to change facade design as required.



Matamata
Country Club