

# Cambridge Left | Villa 3

 x2  x2  x2  254m<sup>2</sup>



P 027 301 3126 | E [sales@matamatacountryclub.co.nz](mailto:sales@matamatacountryclub.co.nz)  
[matamatacountryclub.co.nz](http://matamatacountryclub.co.nz)

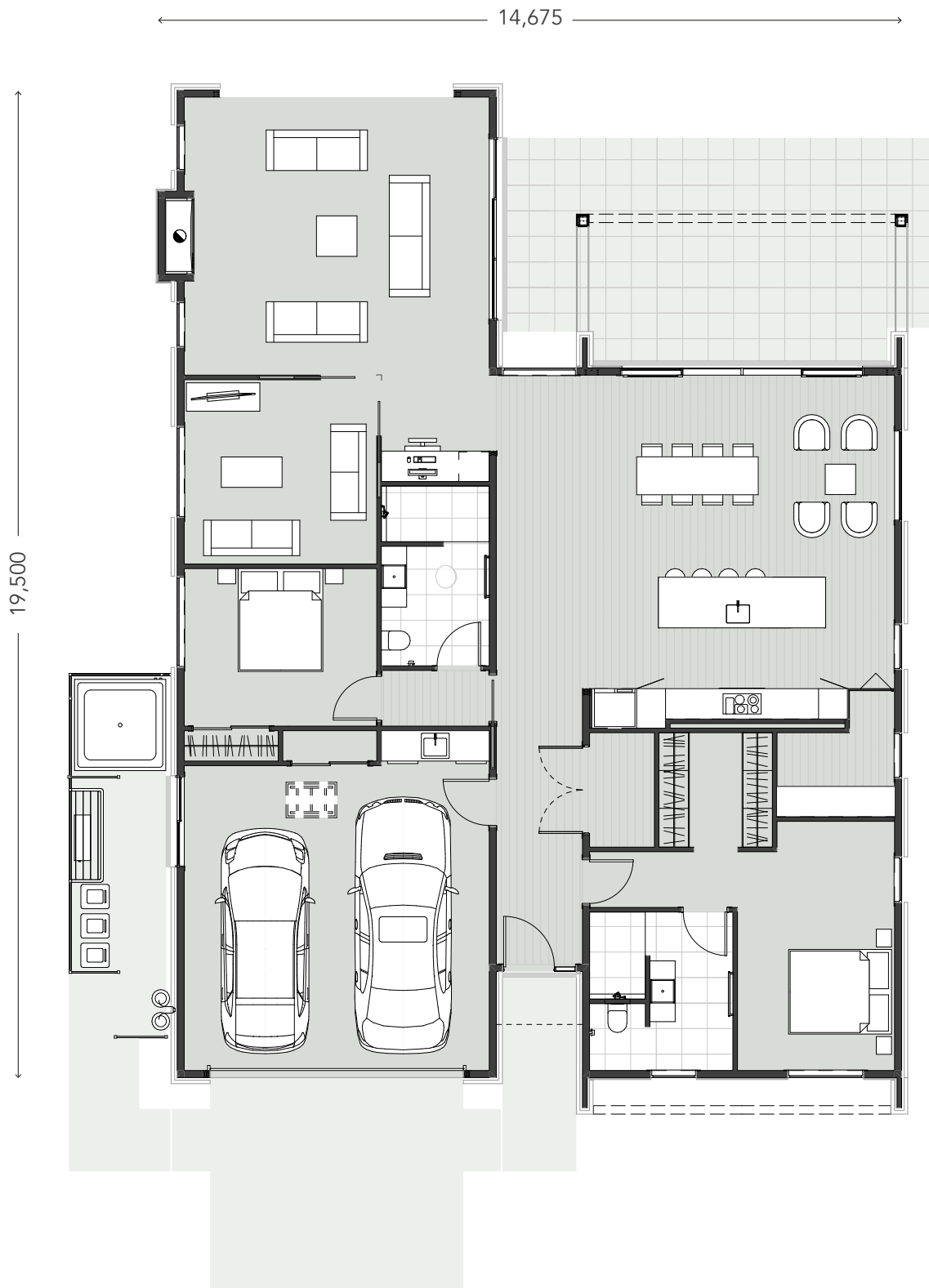
\*Images are for illustrative purposes only and depict Villa 18. Villa 3 may differ from the images shown. Areas are rounded.



**Matamata**  
Country Club

# Cambridge Left | Villa 3

🛏 x2 🚿 x2 🚗 x2 📐 254m<sup>2</sup>



P 027 301 3126 | E sales@matamatacountryclub.co.nz  
matamatacountryclub.co.nz

Facades are for illustrative purposes. Areas are rounded. Matamata Country Club Limited reserves the right to change facade design as required.



Matamata  
Country Club